



Gather. Grow. Give.

*For Good*

| Spring 2020

*give* to the WE ARE PORTER COUNTY EMERGENCY RESPONSE FUND

This newsletter comes to you at a unique and challenging time in our community. Never before has the level of uncertainty and anxiety been so high. We are experiencing crisis on every level – health, economic, social, humanitarian and cultural. The lives of Porter County residents are being affected in real and serious ways due to COVID-19.

As is the case when tragedy strikes, the forces of philanthropy mobilize to respond. The Porter County Community Foundation has established the **We Are Porter County Emergency Response Fund** to help our community meet the basic needs of the individuals and families most significantly affected.

Your Community Foundation, in collaboration with United Way of Porter County, has instituted a rapid-response grant process to provide funding to local nonprofit organizations on the front lines of meeting increased community needs as a result of COVID-19.

**Your help is urgently needed.** If you are accustomed to supporting your favorite charitable cause, please do so with a generous gift today. If you do not have a favorite cause, you can help by giving to the We Are Porter County Emergency Response Fund. It is easy and safe to give online at [www.pccf.gives/weareporter](http://www.pccf.gives/weareporter) or you can mail a check to our office. **100% of your donation will go to help our community** as, together, we cope with this crisis. Thank you for your support!

**GIVE NOW**

to the **We Are Porter County Emergency Response Fund** by visiting [www.pccf.gives/weareporter](http://www.pccf.gives/weareporter) or by check using the return envelope enclosed.

We thank you for your generosity and for making a difference!

YOUR  
*Community Foundation*

Since 1996, the Porter County Community Foundation has been helping you make your generosity last through permanent endowment funds that support your favorite causes...**forever.**

Along with inspiring generosity for the long-term good of Porter County, PCCF collaborates with community partners to address important needs, challenges and opportunities, and dedicates leadership and financial resources toward progress and solutions.

**Imagine Porter County. Better.**

Sincerely,

*Bill*

Bill Higbie  
President & CEO



# we are PORTER COUNTY

Porter County's nonprofit organizations are the fabric of our social safety net and essential partners during this public health crisis. In just four weeks, we received requests for more than \$257,000 from organizations adapting service delivery and providing additional support for our most vulnerable neighbors. Over \$108,000 was awarded to the following sixteen organizations:

- The Caring Place
- Catholic Charities of the Diocese of Gary
- Hilltop Neighborhood House
- Housing Opportunities
- Meals on Wheels of Northwest Indiana
- Moraine House
- New Creation Men's Center
- NorthShore Health Centers
- Opportunity Enterprises
- Portage Township Food Pantry
- Portage Township YMCA
- Porter-Starke Services
- Respite House
- Salvation Army of Porter County
- Society of St. Vincent de Paul – Saint Paul Conference
- Visiting Nurse Association of Northwest Indiana

We are thankful to all the nonprofit organizations in our community who are working diligently to serve the needs of our residents during this unprecedented time.

A collaboration between



Over  
**\$108k**  
total awarded in grants so far



“Porter County is struggling like the rest of our country. Over half of the new clients have never needed food support prior to the COVID-19 crisis. Thanks to this funding and other partnerships, we can feed a family of four for a week for about \$30.”

- Jennifer Wright,  
Executive Director

“Thank you for helping deliver nourishing meals that help our older adults stay safe and healthy and standing with us during this crisis.”

- Sandra Noe,  
Executive Director



“Simply put,” said Jim Drader of New Creation, “your funding kept our lights on. We were able to keep the building open during this time and allow the men to shelter in place at the Resale Shop 24/7.”

- Jim Drader,  
Executive Director

“The assistance you have provided to us, and others in our community, is essential in our response to COVID-19. Thank you for your support and dedication to the health and safety of our friends, colleagues and neighbors.”

- Matthew Burden,  
President & CEO



## GOLD PARTNER



## SILVER PARTNERS

- Berglund Construction Company
- Blue Sky Financial Partners
- Centier Bank
- Hodges and Davis, P.C.
- Horizon Bank
- M.E. Simpson Company, Inc.
- Mechanical Concepts, Inc.
- Porter Health Care System
- Shive-Hattery
- Teachers Credit Union
- Thorgren Tool & Molding

## BRONZE PARTNERS

- First Merchants Bank
- Hoepfner Wagner & Evans LLP
- Precision Control Systems, Inc.
- St. Mary Medical Center
- Thrivent Financial – William P. Maar
- UFS Corporation
- Vidimos, Inc.

## FOUNDATION PARTNERS

- John W. Anderson Foundation
- Peter G. Horton Charitable Remainder Trust



The Caring Place



NorthShore Health Centers



Opportunity Enterprises



VNA of NWI



Portage Township YMCA

Major funding provided by

John W. Anderson Foundation	Dave Milligan
Andy & Sue Arnold	Jacki Stutzman
Horizon Bank	Erin & Rick Urschel
Jane Maxwell	Dean & Barbara White Family Foundation
Stewart & Kathryn McMillan	

With the additional support of many generous Porter County residents



“ We were hoping to fund a capital campaign in 2020. Unfortunately, circumstances have sent us back to basics and we are now just trying to support the nonprofits providing everyday life-saving measures for so many as their pool of clients surges and the well of financial support dwindles. We feel it's our duty to share our resources to make sure we all get through this together. ”

- Rick & Erin Urschel



“ Thank you PCCF and sponsors for matching donations to the Porter County Emergency Response Fund. Your initiative made it easy for us to help area agencies who are working hard to serve those in need. ”

- Sandy and Larry Holt



219.465.0294  
 info@pccf.gives  
 www.pccf.gives  
 1401 Calumet Avenue  
 Valparaiso, IN 46383

*Bard*

ANDREW ARNOLD  
 Precision Control Systems

CHERI BIRKY  
 Birky Farms

DEREK BRAGGS  
 Merrill Lynch

TIM COLEMAN  
 Centier Bank

JULIE ELISHA  
 McColly Real Estate

CAROL HALL  
 Berglund Construction

DAVID HOLLENBECK  
 Blachly Tabor Bozik & Hartman

SCOTT HUFFORD  
 Portage Township Schools

JOE JASKOWIAK  
 Hoepfner, Wagner & Evans

STEPHANIE JONES  
 Cisco Systems

GEOFF LACIAK  
 Laciak Accountancy Group

MEGAN MARSHALL  
 Lakeside Wealth Management

KENT MISHLER  
 Horizon Bank

RALPH NEFF  
 Mechanical Concepts, Inc.

DESILA ROSETTI  
 Organizational Development Solutions

JACKI STUTZMAN  
 Community Volunteer

SPERO VALAVANIS  
 Shive-Hattery

MATT VESSELY  
 1st Source Bank

JENNIFER VIDIMOS  
 Retired Educator

JOHN WALSH  
 Heat Wagon

CELINA WEATHERWAX  
 McMillan Family Foundation

MICHAEL WENDAHL  
 Incremedical Corporation

*Staff*

BILL HIGBIE  
 President & CEO

BRENDA SHEETZ  
 Vice President

BONNY HILDEBRAND  
 Director of Development & Stewardship

ERYN LEONHARD  
 Communications & Marketing Coordinator

JANELLE LEWIN  
 Receptionist

# we are PORTER COUNTY

Porter County's nonprofit organizations are the fabric of our social safety net and essential partners during this public health crisis. In just three weeks, we received requests for more than \$210,000 from organizations adapting service delivery and providing additional support for our most vulnerable neighbors. Over \$80,000 was awarded to the following thirteen organizations:

- The Caring Place
- Hilltop Neighborhood House
- Meals on Wheels of Northwest Indiana
- Moraine House
- New Creation Men's Center
- NorthShore Health Centers
- Opportunity Enterprises
- Portage Township YMCA
- Porter-Starke Services
- Respite House
- Salvation Army of Porter County
- Society of St. Vincent de Paul – Saint Paul Conference
- Visiting Nurse Association of Northwest Indiana

We are thankful to all the nonprofit organizations in our community who are working diligently to serve the needs of our residents during this unprecedented time.

Over  
**\$80k**  
total awarded in grants so far



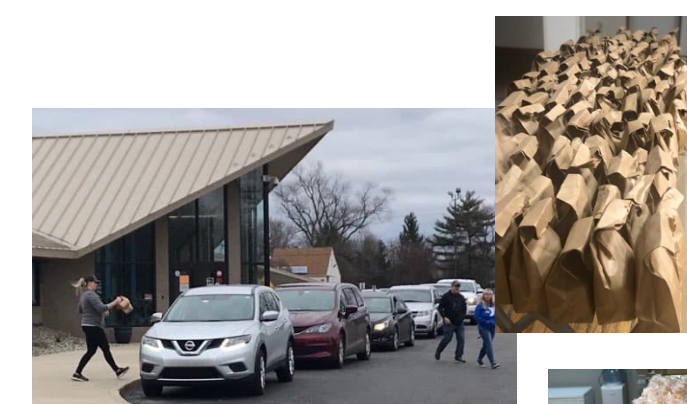

Simply put," said Jim Drader of New Creation, "your funding kept our lights on. We were able to keep the building open during this time and allow the men to shelter in place at the Resale Shop 24/7."

- Jim Drader,  
Executive Director



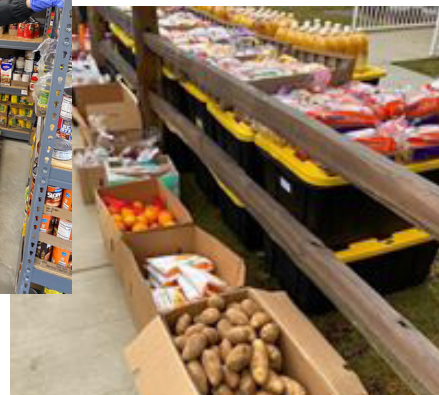
The assistance you have provided to us, and others in our community, is essential in our response to COVID-19. Thank you for your support and dedication to the health and safety of our friends, colleagues and neighbors."

- Matthew Burden,  
President & CEO



Porter County is struggling like the rest of our country. Over half of the new clients have never needed food support prior to the COVID-19 crisis. Thanks to this funding and other partnerships, we can feed a family of four for a week for about \$30."

- Jennifer Wright,  
Executive Director



Thank you for helping deliver nourishing meals that help our older adults stay safe and healthy and standing with us during this crisis."

- Sandra Noe,  
Executive Director



2020 Corporate Partners

### GOLD PARTNER



### SILVER PARTNERS

- Berglund Construction Company
- Blue Sky Financial Partners
- Centier Bank
- Hodges and Davis, P.C.
- Horizon Bank
- M.E. Simpson Company, Inc.
- Mechanical Concepts, Inc.
- Porter Health Care System
- Shive-Hattery
- Teachers Credit Union
- Thorgren Tool & Molding

### BRONZE PARTNERS

- First Merchants Bank
- Hoepfner Wagner & Evans LLP
- Precision Control Systems, Inc.
- St. Mary Medical Center
- Thrivent Financial – William P. Maar
- UFS Corporation
- Vidimos, Inc.

### FOUNDATION PARTNERS

- John W. Anderson Foundation
- Peter G. Horton Charitable Remainder Trust

# we are PORTER COUNTY

Porter County's nonprofit organizations are the fabric of our social safety net and essential partners during this public health crisis. In just three weeks, we received requests for more than \$210,000 from organizations adapting service delivery and providing additional support for our most vulnerable neighbors. Over \$80,000 was awarded to the following thirteen organizations:

- The Caring Place
- Hilltop Neighborhood House
- Meals on Wheels of Northwest Indiana
- Moraine House
- New Creation Men's Center
- NorthShore Health Centers
- Opportunity Enterprises
- Portage Township YMCA
- Porter-Starke Services
- Respite House
- Salvation Army of Porter County
- Society of St. Vincent de Paul – Saint Paul Conference
- Visiting Nurse Association of Northwest Indiana

Over  
**\$80k**  
total awarded in grants so far



We are thankful to all the nonprofit organizations in our community who are working diligently to serve the needs of our residents during this unprecedented time.



“The assistance you have provided to us, and others in our community, is essential in our response to COVID-19. Thank you for your support and dedication to the health and safety of our friends, colleagues and neighbors.”

- Matthew Burden,  
President & CEO



“Porter County is struggling like the rest of our country. Over half of the new clients have never needed food support prior to the COVID-19 crisis. Thanks to this funding and other partnerships, we can feed a family of four for a week for about \$30.”

- Jennifer Wright,  
Executive Director



“Thank you for helping deliver nourishing meals that help our older adults stay safe and healthy and standing with us during this crisis.”

- Sandra Noe,  
Executive Director



“Simply put,” said Jim Drader of New Creation, “your funding kept our lights on. We were able to keep the building open during this time and allow the men to shelter in place at the Resale Shop 24/7.”

- Jim Drader,  
Executive Director



2020  
Corporate Partners

#### GOLD PARTNER



#### SILVER PARTNERS

- Berglund Construction Company
- Blue Sky Financial Partners
- Centier Bank
- Hodges and Davis, P.C.
- Horizon Bank
- M.E. Simpson Company, Inc.
- Mechanical Concepts, Inc.
- Porter Health Care System
- Shive-Hattery
- Teachers Credit Union
- Thorgren Tool & Molding

#### BRONZE PARTNERS

- First Merchants Bank
- Hoepfner Wagner & Evans LLP
- Precision Control Systems, Inc.
- St. Mary Medical Center
- Thrivent Financial – William P. Maar
- UFS Corporation
- Vidimos, Inc.

#### FOUNDATION PARTNERS

- John W. Anderson Foundation
- Peter G. Horton Charitable Remainder Trust

# we are PORTER COUNTY

Porter County's nonprofit organizations are the fabric of our social safety net and essential partners during this public health crisis. In just three weeks, we received requests for more than \$210,000 from organizations adapting service delivery and providing additional support for our most vulnerable neighbors. Over \$80,000 was awarded to the following thirteen organizations:

- The Caring Place
- Hilltop Neighborhood House
- Meals on Wheels of Northwest Indiana
- Moraine House
- New Creation Men's Center
- NorthShore Health Centers
- Opportunity Enterprises
- Portage Township YMCA
- Porter-Starke Services
- Respite House
- Salvation Army of Porter County
- Society of St. Vincent de Paul – Saint Paul Conference
- Visiting Nurse Association of Northwest Indiana

Over  
**\$80k**  
total awarded in grants so far



We are thankful to all the nonprofit organizations in our community who are working diligently to serve the needs of our residents during this unprecedented time.



Porter County is struggling like the rest of our country. Over half of the new clients have never needed food support prior to the COVID-19 crisis. Thanks to this funding and other partnerships, we can feed a family of four for a week for about \$30.

- Jennifer Wright,  
Executive Director

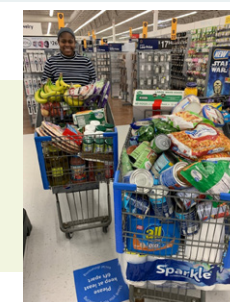
Thank you for helping deliver nourishing meals that help our older adults stay safe and healthy and standing with us during this crisis.

- Sandra Noe,  
Executive Director



Simply put," said Jim Drader of New Creation, "your funding kept our lights on. We were able to keep the building open during this time and allow the men to shelter in place at the Resale Shop 24/7."

- Jim Drader,  
Executive Director



The assistance you have provided to us, and others in our community, is essential in our response to COVID-19. Thank you for your support and dedication to the health and safety of our friends, colleagues and neighbors.

- Matthew Burden,  
President & CEO



PORTAGE TOWNSHIP YMCA



## GOLD PARTNER



## SILVER PARTNERS

Berglund Construction Company  
Blue Sky Financial Partners  
Centier Bank  
Hodges and Davis, P.C.  
Horizon Bank  
M.E. Simpson Company, Inc.  
Mechanical Concepts, Inc.  
Porter Health Care System  
Shive-Hattery  
Teachers Credit Union  
Thorgren Tool & Molding

## BRONZE PARTNERS

First Merchants Bank  
Hoepfner Wagner & Evans LLP  
Precision Control Systems, Inc.  
St. Mary Medical Center  
Thrivent Financial – William P. Maar  
UFS Corporation  
Vidimos, Inc.

## FOUNDATION PARTNERS

John W. Anderson Foundation  
Peter G. Horton Charitable  
Remainder Trust

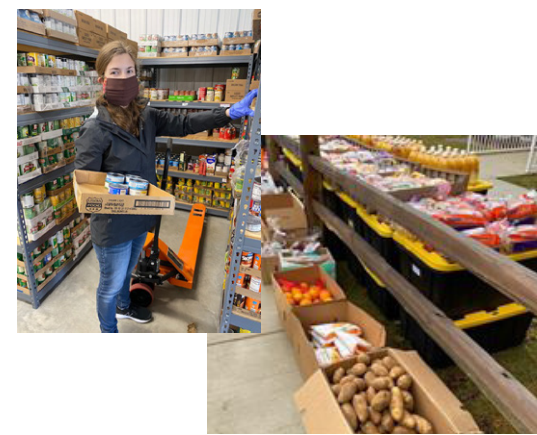
2020 Corporate Partners

# we are PORTER COUNTY

These are the organizations who have received funding from the We Are Porter County Emergency Response Fund. More grants will be awarded to organizations each week. The need is great and the cause even greater. We thank these, and all Porter County organizations, for what they are doing to serve our community during this time of uncertainty.

## The Caring Place

Having women and children in shelter at all times, The Caring Place needed funding for the increased grocery bills, sanitation and cleaning supplies. Personal protective



## Hilltop Neighborhood House

Hilltop's food pantry is feeding 3 times its usual clientele and has opened its pantry a second morning each week. The pantry is experiencing a swell of families seeking supplemental food due to sudden unemployment in Valparaiso. All of the grant funds will be used to purchase additional food for distribution. "Porter County is struggling like the rest of our country. Over half of the new clients have never needed food support prior to the COVID-19 crisis. Thanks to this funding and other partnerships, we can feed a family of four for a week for about \$30." -- Jennifer

## Meals on Wheels of Northwest Indiana

Meals on Wheels was challenged to deliver nutrition to seniors who can't go to the closed congregate meal sites. This along with a decrease in the number of volunteers due to the virus, the organization had to pay staff to run meal routes. Support from the We Are Porter County Emergency Response Fund allowed them to purchase frozen meals and insulated containers to deliver multiple meals in one delivery. "Thank you for helping deliver nourishing meals that help our older adults stay safe and healthy and standing with us during this crisis." -- Sandra Noe,



## Moraine House and Respite House

Recovery is not easy in normal times, let alone during a pandemic. All of the men living at Moraine House and Respite House have been laid off leaving them with no income to pay their rent. Funds provided through the Emergency Response Fund



## New Creation Men's Center



Making the decision to close the doors of their resale shop was difficult for New Creation Men's Center. The resale shop provides funding to keep their program operating. Shelter normally provided by area churches was moved to the resale shop when churches were closed. Funding allows New Creation to keep the building operational in the near term.

"Simply put," said Jim Drader of New Creation, "your funding kept our lights on. We were able to keep the building open during this time and allow the men to shelter in place at the Resale Shop 24/7."

## NorthShore Health Centers

The NorthShore Health Center staff play a crucial role in overcoming the COVID-19 outbreak. Increasing the purchase of personal protective equipment was necessary to keep staff safe

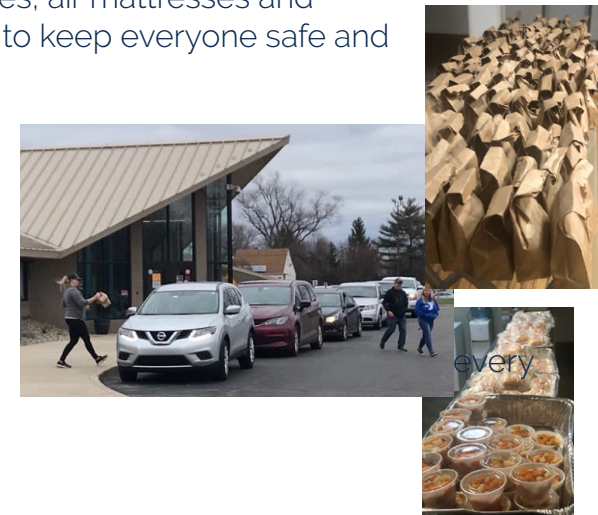


## Opportunity Enterprises

While closing the majority of their day programs, Opportunity Enterprises made the extraordinary decision to have staff shelter in place with their residential clients. This required staff to stay as many as 14 days straight with clients in order to minimize the potential to spread the virus. Additional groceries, air mattresses and personal protective equipment was purchased to keep everyone safe and nourished.

## Portage Township YMCA

The Portage Township YMCA collaborated with the City of Portage, the Portage Township Trustee and the Portage Township School Corporation to combat hunger from several, non-duplicated angles. Funding allowed them to provide two ready-to-eat meals (lunch and supper) to children AND adults



## Porter-Starke Services

The health and safety of clients and staff during the COVID-19 Pandemic is the major concern of Porter-Starke Services. Funding was provided for much needed personal protective equipment and take home dose containers. "The assistance you have provided to us, and others in our community, is essential in our response to COVID-19, said Matthew Burden, President and CEO of Porter-Starke Services. "Thank you for your support and

## Salvation Army of Porter County

The Salvation Army of Porter County assembled "Pandemic Kits" to be delivered to seniors and for use by emergency response teams and medical personnel



## Society of St. Vincent de Paul



Helping clients who are low income, food and shelter insecure and struggling to make ends meet, Society of St. Vincent de Paul is experiencing a dramatic increase in calls for assistance as a result of COVID-19. With regular support curtailed due to the cancellation

## Visiting Nurse Association of Northwest Indiana

Equipment for the protection of patients, staff and caregivers is vital at the Visiting Nurse Association of Northwest Indiana. In addition, within 48 hours, they converted their entire workforce (other than hospice nurses and aides) to a work-from-home format while still delivering needed services. Insulated containers were



### GOLD PARTNER



### SILVER PARTNERS

Berglund Construction Company  
Blue Sky Financial Partners  
Centier Bank  
Hodges and Davis, P.C.  
Horizon Bank  
M.E. Simpson Company, Inc.  
Mechanical Concepts, Inc.  
Porter Health Care System  
Shive-Hattery  
Teachers Credit Union  
Thorgren Tool & Molding

### BRONZE PARTNERS

First Merchants Bank  
Hoepfner Wagner & Evans LLP  
Precision Control Systems, Inc.  
St. Mary Medical Center  
Thrivent Financial – William P. Maar  
UFS Corporation  
Vidimos, Inc.

### FOUNDATION PARTNERS

John W. Anderson Foundation  
Peter G. Horton Charitable Remainder Trust

2020 Corporate Partners



# we are PORTER COUNTY

Porter County's nonprofit organizations are the fabric of our social safety net and essential partners during this public health crisis. In just three weeks, we received requests for more than \$210,000 from organizations adapting service delivery and providing additional support for our most vulnerable neighbors. Over \$80,000 was awarded to the following thirteen organizations:

- The Caring Place
- Hilltop Neighborhood House
- Meals on Wheels of Northwest Indiana
- Moraine House
- New Creation Men's Center
- NorthShore Health Centers
- Opportunity Enterprises
- Portage Township YMCA
- Porter-Starke Services
- Respite House
- Salvation Army of Porter County
- Society of St. Vincent de Paul – Saint Paul Conference
- Visiting Nurse Association of Northwest Indiana

We are thankful to all the nonprofit organizations in our community who are working diligently to serve the needs of our residents during this unprecedented time.





Over  
**\$80k**  
total awarded in grants so far

“Simply put,” said Jim Drader of New Creation, “your funding kept our lights on. We were able to keep the building open during this time and allow the men to shelter in place at the Resale Shop 24/7.”

- Jim Drader,  
Executive Director



“The assistance you have provided to us, and others in our community, is essential in our response to COVID-19. Thank you for your support and dedication to the health and safety of our friends, colleagues and neighbors.”

- Matthew Burden,  
President & CEO







PORTAGE TOWNSHIP YMCA













Porter County is struggling like the rest of our country. Over half of the new clients have never needed food support prior to the COVID-19 crisis. Thanks to this funding and other partnerships, we can feed a family of four for a week for about \$30.”

- Jennifer Wright,  
Executive Director

“Thank you for helping deliver nourishing meals that help our older adults stay safe and healthy and standing with us during this crisis.”

- Sandra Noe,  
Executive Director



2020 Corporate Partners

<p><b>GOLD PARTNER</b></p>    	<p><b>SILVER PARTNERS</b></p> <p>Berglund Construction Company Blue Sky Financial Partners Centier Bank Hodges and Davis, P.C. Horizon Bank M.E. Simpson Company, Inc. Mechanical Concepts, Inc. Porter Health Care System Shive-Hattery Teachers Credit Union Thorgren Tool &amp; Molding</p>	<p><b>BRONZE PARTNERS</b></p> <p>First Merchants Bank Hoepfner Wagner &amp; Evans LLP Precision Control Systems, Inc. St. Mary Medical Center Thrivent Financial – William P. Maar UFS Corporation Vidimos, Inc.</p>
<p><b>FOUNDATION PARTNERS</b></p> <p>John W. Anderson Foundation Peter G. Horton Charitable Remainder Trust</p>		